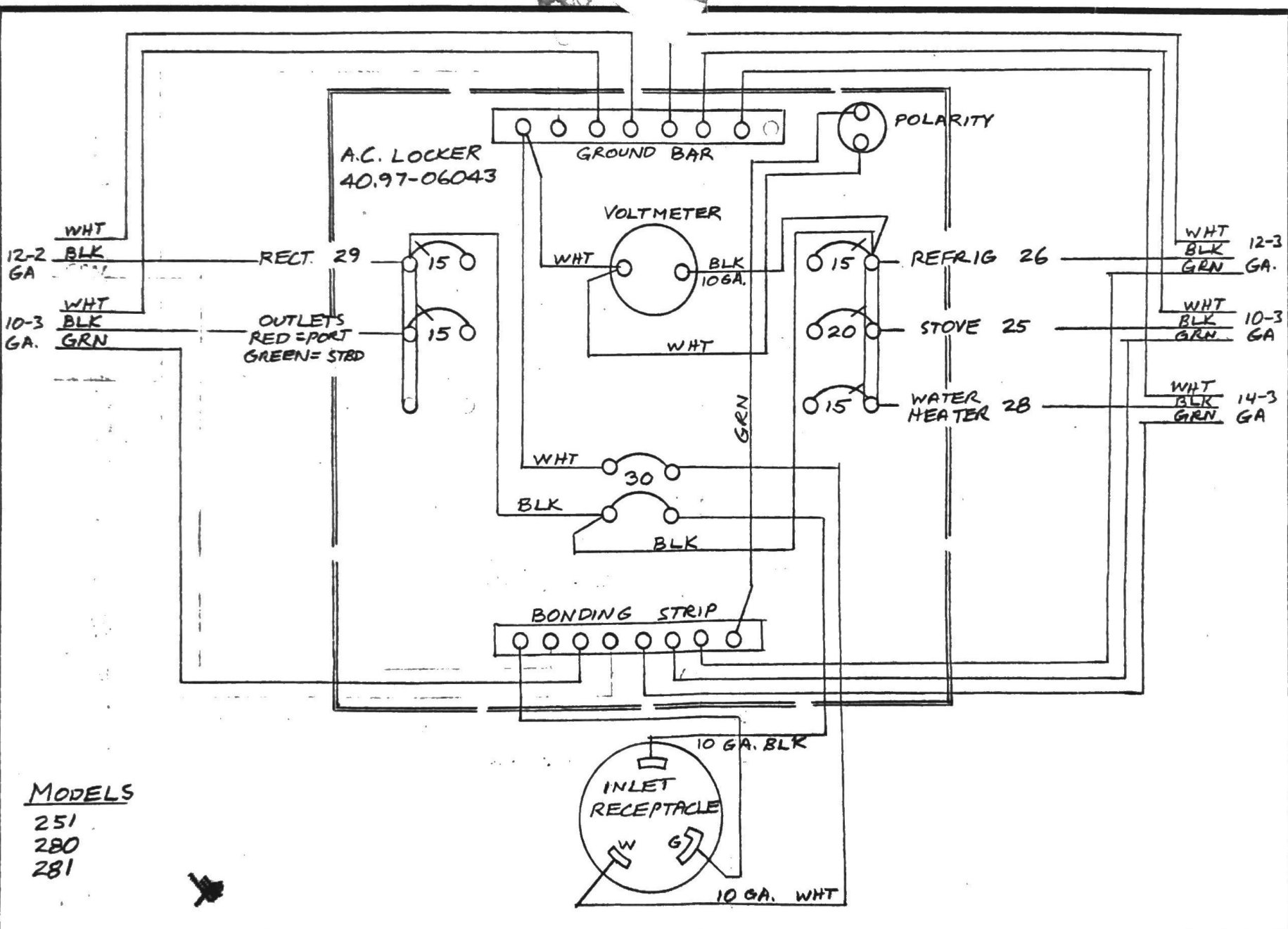


ITEM	ISM NO	DESCRIPTION	QTY
BILL OF MATERIAL			
HULL NO.			
SERIES MODEL 280			
BOAT WIRING DIAGRAM			
CHRIS-CRAFT CORPORATION			
POMPANO BEACH, FLORIDA			
DRAWN BY	LE JEHIS	MATERIAL	DATE 11-22-70
CHECKED			SCALE
APPROVED			NO. 2-9



MODELS
251
280
281

115 VAC LOCKER WIRING
DIAGRAM

CHRIS-CRAFT CORPORATION
HOLLAND, MICHIGAN

DV

SCALE — DATE 1-29-80

NO. 29.00-02241

FUEL TANK SENDER
14 BLACK
14 WHITE

4 TAN

START BAT
50 AM
02-01-12193

2

50 AMP
02-05-10266

STOP BAT
50 AM
02-01-12193

3

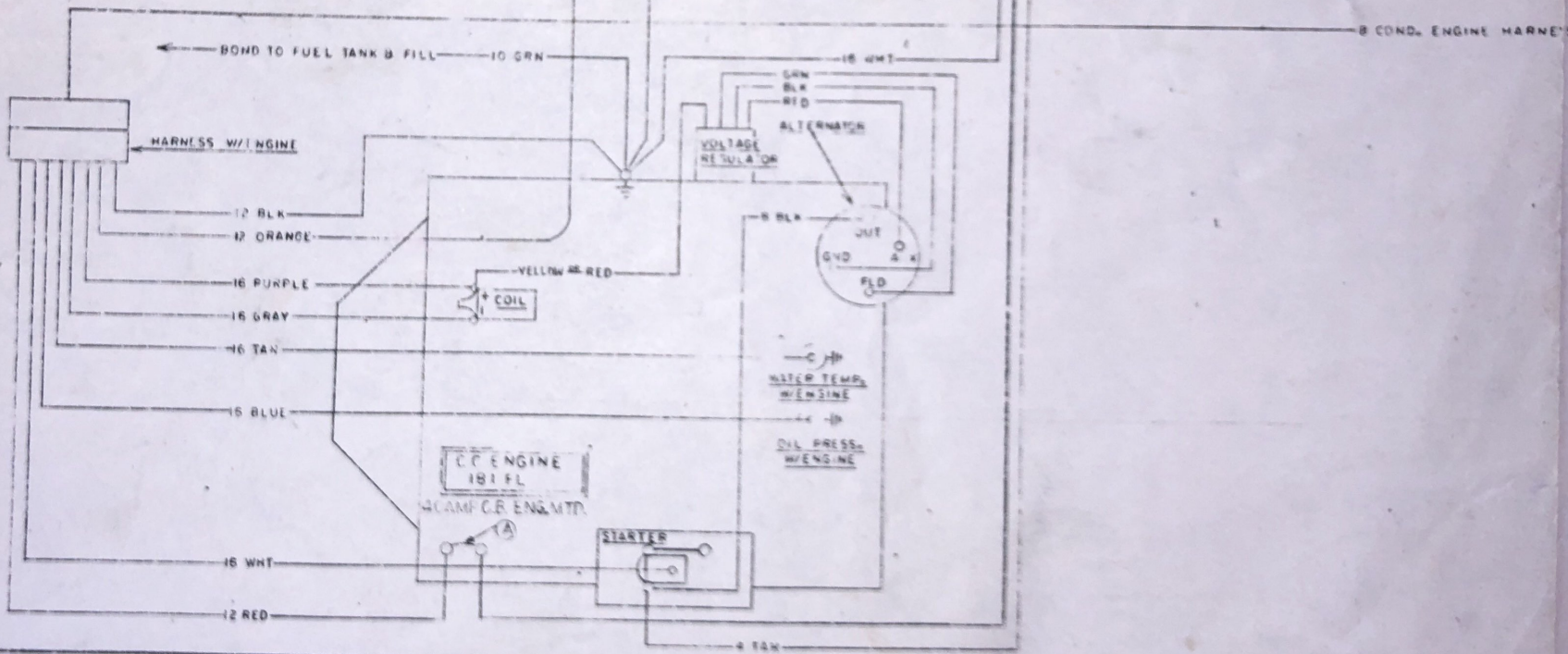
RE-ALLIANCE
PUMP COIL

THIS WIRE REMOVED FROM "JUX" OF ALTERNATOR

16 GAUGE
STERN LT 0712-00027

BILGE BLOWER 4962-00140

BILGE PUMP 4752-00011



BOND TO FUEL TANK B FILL 10 GRN

HARNES W/ ENGINE

12 BLK

12 ORANGE

16 PURPLE

16 GRAY

16 TAN

15 BLU

16 WHT

12 RED

C.B. ENGINE
181 FL
40 AMP C.B. ENG. MTD.

STARTER

VOLTAGE
REGULATOR

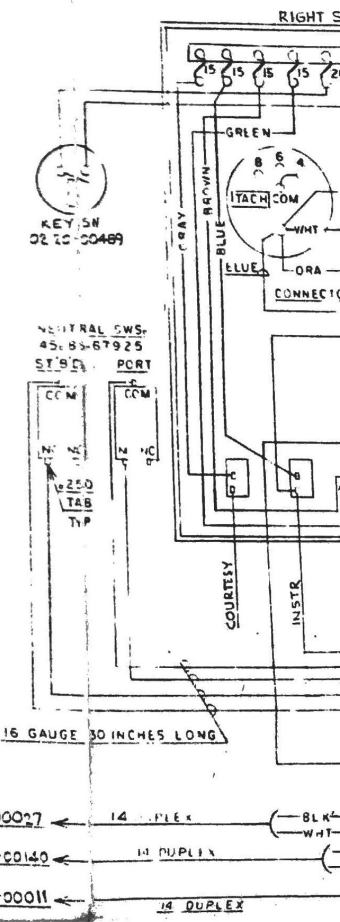
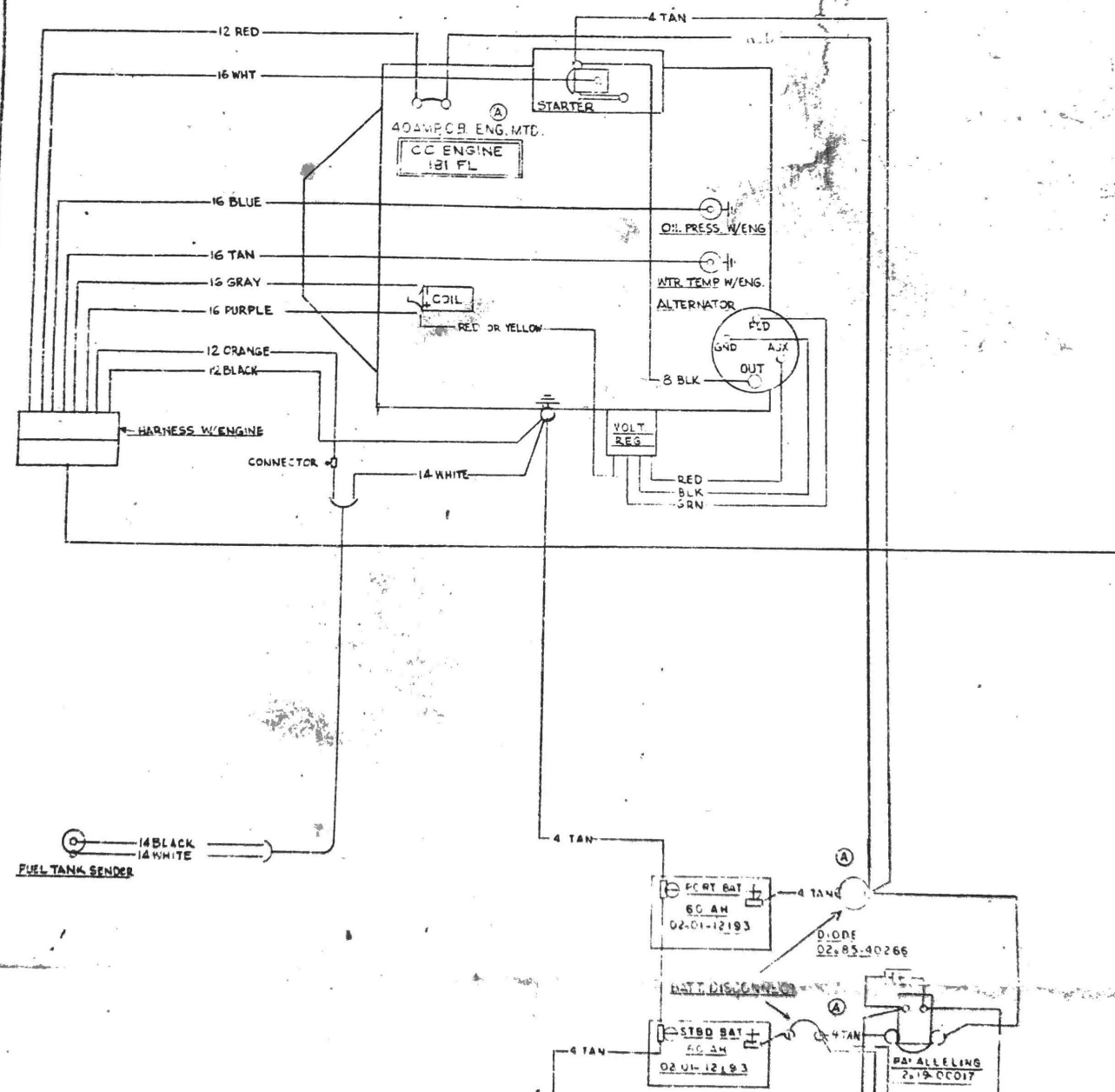
ALTERNATOR

JUX
GND
A
FLD

WATER TEMP.
W/ENGINE

OIL PRESS.
W/ENGINE

B COND. ENGINE HARNE'S



LET	ALTERATION	DATE	BY	APP'VD
A	REAMP CIRCUIT BREAKER ENG. MTL BATT DISC	3-15-78	G I	

COMP. BOWANCHOR LT.
07.12.03900

42.09-00062
COMPASS

50.23-00067
HORN

RIGHT SIDE - REAR VIEW

LEFT SIDE - REAR VIEW

COMB.
RED/GREEN
LIGHT
07.12-02408

KEY SW
02.20-00489

SN
00489

RAIL SWS-
-67925
PORT

010

30 INCHES LONG

TO STD WIPER
(B50)

14 D U P L E X

14 D U P L E X

14 D U P L E X

14 D U P L E X

